



Our Mission:

"We Provide the Best Personalized Financial Services"

KGEFCU NEWS

www.kgefcu.org

"Together, We Make It Happen"

September 2011

This Issue

- 65th Annual Meeting
- International CU Day
- Ohana Happenings: Making Room For SEG's
- Invest In Relationships
- Do You Know What I Am?
- Member Survey Winner
- Important Supervisory Committee Notice
- CEO's Corner
- Current Rates
- Growth Chart
- Bad Credit..? No Credit..?
- "We Are Family"
- Today Is Your Birthday
- Current SEG List

Holiday Schedule Closed

- Veteran's Day**
Friday, November 11th
- Thanksgiving, Day**
Thursday, November 24th
- Christmas Day Observed**
Monday, December 26th
- New Year's Day Observed**
Monday, January 2nd

Kaua'i Government Employees FCU

2976 Ewalu Street/PO Box 711
Lihue, Kaua'i, HI 96766
Telephone: 808-245-2463
www.kgefcu.org

Telephone Banking

800-330-8115

Lost or Stolen Debit Cards

800-472-3272

Business Hours

Monday - Wednesday
7:45a.m. - 4:30 p.m.

Thursday

8:30a.m. - 4:30 p.m.

Friday

8:30a.m. - 6:00 p.m.

Drive-Thru Hours:

Monday - Thursday
10:00a.m. - 3:00p.m.

Friday

10:00a.m. - 5:00p.m.

65th Annual Membership Meeting

will be held on Friday, February 24, 2012 at the Kaua'i War Memorial Convention Hall

Mark your calendars! For the first time ever, Kaua'i Government Employees FCU will be holding its Annual Membership Meeting and Luau on a **Friday**. The election will not be conducted by ballot this year and there will be no nominations from the floor since the number of nominees equals the number of positions to be filled. Nominations may be made by petition signed by 1% of the members with a minimum of 60 and a maximum of 500 signatures per petition. Nominees by petition must sign a statement that they are agreeable to the nomination and will serve if elected to office. Nominations by petition must be filed with the Secretary of the credit union at least 40 days before the annual meeting. (January 10, 2012). The secretary will ensure that nominations by petition, along with those of the nominating committee, are posted in a conspicuous place in the credit union's office at least 35 days before the annual meeting.

International Credit Union Day October 20, 2011



At some point, you've probably wondered what the difference is between credit unions and other financial institutions. In reality, many differences exist, but the short of it is this: Credit unions exist to help people, not to make a profit. That difference resulted in Kaua'i Government Employees Federal Credit Union being established as a financial cooperative rather than a bank. *Intl. CU Day continued...*

Board of Directors

- Ken VillabrillePresident*
- Eugene Jimenez.....Vice President*
- Dennis HigashiSecretary*
- Byron WatanabeTreasurer*
- Anita AquinoMembership*

Read & Win!*

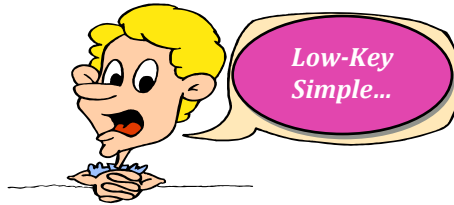
Read this Newsletter
See Your Name
WIN! \$25
Call: 245-2463



Proudly Serving Kauai's County, State and Federal Employees and Employees of Select Employer Groups (SEG's) and their immediate families.

*Names associated with articles are excluded

Ohana Happenings: KGEFCU Makes Room for SEG's...



“Invest In Relationships”

“We needed a small business loan to help grow our business when an opportunity for a new location opened up for us on the south shore. After talking with a few banks, we decided to give Tom Vallatini at Kaua'i Government Employees FCU a call. The process was very low-key and simple. Tom helped us get the money we needed at a comfortable pay-back time frame and we waited less than one week for the funds. I have already recommended KGEFCU to others and will continue to do business with them in the future. Thank you for not treating your members like a credit bureau print-out and for continuing to invest in relationships over numbers.” *Tiffany Grande and Androcles Handy of Grande's Gems and Men's Hardware.*

Kaua'i Government Employees FCU is now offering Select Employer Groups (SEG's) access to their well equipped, tech savvy conference room. This room accommodates up to 12 people, has internet connections, a 2300MP projector, telephone conferencing system and more. Recently, **Social Kaua'i** has conducted classes that provide social media training and community marketing strategies to local businesses and non-profit organizations. SEG's can now sign up on an availability basis by contacting 855-2942 or e-mail lisa@kgefku. Kathryn L. Atendido

Intl. CU Day continued...

In order to increase public awareness of cooperatives and promote their formation and growth, the United Nations General Assembly has designated 2012 as the International Year of Cooperatives (IYC) with the theme “**Cooperative Enterprises Build a Better World.**”

As financial cooperatives that stand on social responsibility and economic viability, credit unions play a substantial role in the global cooperative movement. In 97 countries, close to 186 million people are members of credit unions. Credit unions around the world have taken that message to heart and adapted it for their **International Credit Union Day celebration on October 20, 2011**, which is the launch of the 2012 IYC. Please join us in celebrating International Credit Union Day.

Do You Know What I am?



Don't have a smart phone?
Go to: www.kgefku.org

“Member Survey” Results

And The \$100 Winner Is...
Dennis Muffly! Thank you for participating in our Member Survey. “*Together, We Make It Happen*”

Attention Members! Account Audit in Progress

The Supervisory Committee is conducting its bi-annual audit of all member accounts. This audit is required by the National Credit Union Administration (NCUA), an agency of the federal government that regulates federal credit unions. If there are any discrepancies in your account, please notify your Supervisory Committee at the address below.

Supervisory Committee

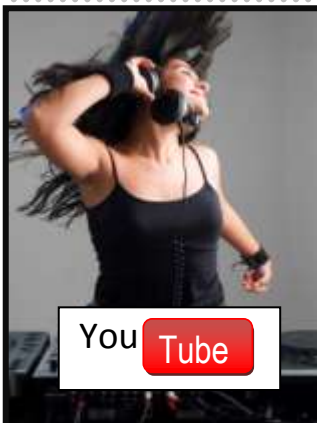
Kaua'i Government Employees FCU
P.O. 3964 Lihue, HI 96766
E-Mail: auditors@kgefku.org
Telephone: 808-855-2949
Melvin Ota – Chairperson
Stu Burley – Committee Member
David Longmore – Committee Member

Student Jingle Contest

Are you a student who attends a public school on Kaua'i? Get your group together and enter KGEFCU's “Together, We Make It Happen” Jingle Contest. The winning group will receive \$500 for your school and will be featured in credit union radio commercials. Place your video on YouTube and impress your friends.



You Tube





CEO's Corner...

Compliance is on my mind these days. It seems I can't pick up a credit union publication without running across all the onerous implications of the new regulatory world we live in and how we have to comply. A recent NCUA (National Credit Union Association) publication sought to justify their move to tighten regulations on CUSO's (Credit Union Service Organization). Sage Watanabe. Of course, examples were given as to why and it reminded me of our saying back on the ranch; "We always seem to close the barn door after the horses run off." I'll bet that if we applied a Deming-type Control Chart to the origins of lots of these new regulations, we'd find them to be "outside-of-system" anomalies. Oh well, that's just me.

"We are always here for you."
Corinne King
 Kauai Government Employees FCU
 CEO/General Manager

"Together, We Make It Happen"

Current Rates...

Kauai Government Employees FCU



SHARES.....	APY (Annual Percentage Yield)
Regular Shares.....	0.250% - 1.004%
Christmas Club Account	0.250%
Money Market Account	0.625% - 1.510%
Individual Retirement Account	0.500% - 0.501%
Traditional & Roth IRA Certificate.....	1.000% - 2.778%
Share Certificate	1.000% - 2.778%
Share Draft.....	0.250%

Contact your credit union for further information on applicable fees and terms

LOANS..... APR (Annual Percentage Rate)

Personal Loans

1 year.....	5.75% - 11.75%
2 year.....	6.25% - 12.25%
3 year.....	6.75% - 12.75%
4 year.....	7.25% - 13.25%
5 year.....	7.75% - 13.75%
6 year.....	8.50% - 14.50%

Share Secured

1 - 5 years.....	5.00%
6 - 7 years.....	5.50%
8 - 10 years.....	6.00%
Share Draft Overdraft Line of Credit	10.00% - 16.00%

New & Used Cars

1 - 4 years, 100% financing	4.25% - 8.25%
5 years, 100% financing	4.75% - 8.75%
6 years, 100% financing (\$20,000 and over)	5.25% - 9.25%
7 years, 100% financing (\$30,000 and over)	5.75% - 9.75%
Mixed Collateral (Signature & Shares) up to 6 years	4.75% - 8.75%
Mortgage Loans - 15 yr Balloon/30 yr Amort; Fixed up to \$650,000	5.00%
Mortgage Loans - 20-year fixed, up to \$650,000 Owner Occupant.....	5.25%
Home Equity LOC - 15-year Variable	
80% of Equity Value or \$650,000 maximum (whichever is less) as low as.....	3.75%
Home Equity LOC - 20-year Variable	
75% of Equity Value or \$650,000 maximum (whichever is less) as low as	3.75%
Student Loans up to \$8,000 per year maximum four years.	
Repayment terms up to ten years when school ends.	6.25%

Share and Loan Rates and the Annual Percentage Rates are subject to change without notice. We do business in accordance with the Federal Fair Housing Law and the Equal Credit Opportunity Act.

Dividend Rates effective July 1, 2011.

Your savings federally insured to at least \$250,000 and backed by the full faith and credit of the United States Government. National Credit Union Administration is a U.S. Government Agency.

KGEFCU's Growth Chart

	<u>August 2011</u>	<u>August 2010</u>
Assets	\$83,216,336	\$73,924,157
Loans	50,551,949	32,302,478
Investments	28,040,225	34,065,774
Shares	74,985,796	66,204,296
Members	6,003	5,487

*Dividends on Regular Shares Tiered
 From 0.250% - 1.004% APY
 as of July 1, 2011.*

facebook
 Become a Fan

Bad Credit..?
 No Credit..?

"The Credit Builder Loan"

Apply Online Today
www.kgefcu.org

8.0% APR*

*Restrictions Apply



"We Are Family"

is this year's theme for the Kaua'i County Farm Bureau Fair. Each year KGEFCU sponsors the Opening Night Black-Out Bingo and Saturday afternoon Keiki Talent Competition. Members received free bingo cards, free senior and keiki entrance passes.



The \$500 Black-Out Bingo Winner was won by **Garrick Merrell**. He was one of over three hundred people in attendance.

2011 Farm Fair Keiki Talent Competition "WINNERS"



Ages 6-10:

1st Place – Kay Lynn Drake

2nd Place – Faith Tafua

3rd Place – Paul Ruff

Ages 11-16:

1st Place – Helena Huffman

2nd Place – Lexi Warnock

3rd Place – Keaton-Joseph
Mariano-Hardy

Today Is Your Birthday!



Lindsey Nakayama of Hanalei Taro & Juice Company bought herself a 2008 Ford Expedition from Ohana Motors on her birthday. She was able to take advantage of KGEFCU's 1% Employee Discount during the **"August Auto Sale"**. Kuhio Motors and Midpac Auto Center also participated by providing members great vehicles at a great value. Baron T. Rapozo

Select Employer Group (SEG) Program*

Offer credit union membership as an employee benefit to your employees. When you enroll in KGEFCU's Select Employer Group Program, your employees become eligible for membership. They'll have access to low interest loans, Savings and Checking Accounts, VISA Debit Card, Free Online Banking, Bill Payer, E-Statements, Telephone Banking, Direct Deposit and much more. **Enroll Now!** For more information on this program visit our website @ www.kgefco.org or Call 855-2942. "Together, We Make It Happen."

***Employees of these Select Employer Groups and their immediate families are eligible for membership.**

Adolf's Auto Body
All Kaua'i Cleaning Co.
Aloha Furniture Warehouse
Aloha Island Properties
Avis Rent-a-Car
Banyan Harbor
Benzaken Investment Group
Brennecke's Beach Broiler
Brennecke's Beach Bungalow
Buddha Boutique LLC
C-Lure Fishing Charters, Inc.
Café Portofino
Care Safe, Inc.
Charlie's Custom Drapery & Upholstery
Coconut Coast Electric
Coy R. Rebmann, DDS, Inc.
Creative Therapy, Inc.
Dang Rentals
Enterprise Holding/Alamo/National
Esaki Surveying & Mapping, Inc.
Flowers Forever LLC
FM 97 Radio
Garden Island Flying Club LLC
Grande's Gems
Hale Kaua'i Ltd.
H. Hawaii Media
Hawaii Healthcare Professionals, Inc.
Hawaii Security Alarm Systems
Haz Marble & Tile

Honolulu Industrial Coating Co., Inc.
Hurst Group LLC
Ho'omana Painting, Inc.
IT Kaua'i, Inc.
J.B. Cummings, Inc.
J.B. Tree Trimming & Landscaping
Jack Harter Helicopters
JJ's Broiler
JM Pacific Construction LLC
Kaua'i Air Conditioning & Refrig.
Kaua'i Athletic Club
Kaua'i Community College-Students
Kaua'i Food Bank, Inc.
Kaua'i Growers Exchange
Kaua'i Kilohana Partners
Kaua'i Office Equipment, Inc.
Kaua'i Optometric Center
Kaua'i Producers, Ltd.
Kaua'i Toyota
Kaua'i United Way
Kelepa Koa, Inc.
Kilohana Lighting, Inc.
King Auto Center
K & S Pumping
KONG Radio Group
Kuhio Motors
Lihue Pharmacy, Inc.
M & K Distributors, Inc.
M. Tanaka Store, Inc.

Maile Properties of Kaua'i
Midpac Auto Center
MK Services DBA
Mokihana Travel Services
Mr. Green Energy
Native Hawaiian Conservation
No Ka Oi Property Mngt. & Wellness
North Shore Executive Services
Nursefinders of Kaua'i
Nukumoi Surf Company
Ohana Motors
Puakea Golf Course
Richie's Bar & Grill
R.W. Palama & Sons
Savage Shrimp
Social Kaua'i
Speedie Lube of Hawaii, Inc.
S & S Business Machines, Inc.
Studio 203 Salon
Suzuki Kaua'i
Talk Story Bookstore
Tamba Surf Company LLC
The Fence Company
The Garden Island Newspaper
The Hertz Corporation
The Professionals Unlimited
Toolmaster Hawaii, Unincorporated
Up-to-Date Cleaners Kaua'i, Inc.
Werner Construction, Inc.